



# WALES PRIMARY NEWSLETTER

## FRIDAY 29th March 2024

### DATES FOR YOUR DIARY

#### March 2024

Thursday 28th Break up for Easter Holiday

Friday 29th School Closed for Good Friday Bank Holiday

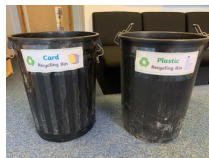
#### April 2024

Monday 15th Children return to school after Easter holiday

#### May 2024

Monday 6th school closed for Bank Holiday

The Eco school committee have set up two large bins for recycling. We are now collecting cardboard boxes and tubes as well as plastic bottles, trays and pots for our DT model making projects. Please hand your recycling to your child's class 'Eco Warrior' who will put it into the correct bins.



### POLITE REMINDER

Ensure your child(ren) have a **water** bottle every day.

Ensure your child's uniform is name labelled, including their coats.

FS2, Y1, Y2 and Y3 children bring their reading log book to school everyday.

Any lost property will be stored in the entrance to the school hall. It can be collected at the end of the school day with a parent/carer.

P.E kits are to be worn on the day of your child's P.E lesson. No football kits or gymnastics outfits are allowed.

Check your child's class webpage for information specific to their class.

If your child is entering school by themselves please be aware that the school gates are locked until 8:30am.

### Children's appointments

If your child has an appointment to attend out of school but in school hours please email the school office **not** their class teacher. The admin team will then inform the teacher at an appropriate time.

Thank you

email: [school@walesprimary.co.uk](mailto:school@walesprimary.co.uk)

*Please see next two pages for more information*

## IN SCHOOL THIS WEEK...

**Year 1** have been investigating mass using the balance scales and developing their mathematical language to compare and measure objects.

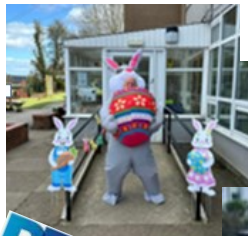


**Year 5** have stepped back in time to recreate a Victorian classroom. They explored artefacts of the era, had a go at writing with ink pens and tasted some gruel. The children and teachers went to great efforts to dress in Victorian costume for the day which helped them get into character – especially Mrs Long – Melton!



PTO for more...

## EASTER EGG CHALLENGE



### Message from the Senior Leaders

It has been another fantastic term of learning here at Wales Primary and we want to thank all pupils, staff and parents for their continued hard work and support. The children have had some amazing experiences in and out of school since Christmas including sporting activities, science workshops and book related events. Well done to all pupils achieving Child of the Term for the spring term. As always, it was a very difficult decision for teachers to make as there are so many amazing pupils across school. We wish each and every family a wonderful Easter break and look forward to the summer term ahead.

### CONTACT INFORMATION

For emergency and urgent messages, plus notification of medical appointments please contact the school office:

Tel: 01909 770236 email: [school@walesprimary.co.uk](mailto:school@walesprimary.co.uk)

To contact your child's teacher regarding their learning and/or behaviour please use their email address. This can be found on your child's class web page on School Spider: [www.walesprimary.co.uk](http://www.walesprimary.co.uk)



# WALES PRIMARY NEWSLETTER

## FRIDAY 29th March 2024 contd



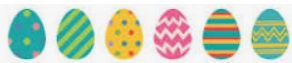
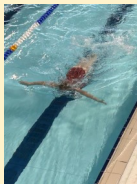
## South Yorkshire Orienteers

Are you looking for something fun and outdoors to do with your children during the Easter break?

Click on the link to find out about a local orienteering challenge:

<https://www.southyorkshireorienteers.org.uk/events/event/937:orienteering-rotherham-give-it-a-go>

Our Orienteering Rotherham series is an ideal chance to give orienteering a go in your local parks. Ideal for families, this is a great opportunity to try a new, free activity. You can go individually or in a group and walk or run at your own pace. Our friendly volunteers will be on hand to explain what to do!



THANK YOU!



Another amazing afternoon was put together by the infamous PTFA volunteers to create an Easter Egg challenge. Thank you to all involved in creating the challenges, bunny ears, chocolate eggs and decorations around school. The children thoroughly enjoyed it.

## Attendance Award

18th to 22nd March		25th to 28th March	
FS2	93.2%	FS2	90.8%
Y1	96.9%	Y1	95.6%
Y2	94.7%	Y2	95.7%
Y3	98%	Y3	98.5%
Y4	97.8%	Y4	93.3%
Y5	96.1%	Y5	98.2%
Y6	98.6%	Y6	93.9%



## Class Assembly Dates

FS2- Friday 17th May at 2:30pm

Y1- Friday 24th May at 9am

Y5- Thursday 23rd May at 9am

All families are welcome to attend.